



TANDBERG
IBM Lotus
Sametime Integration
V 2.0

The TANDBERG IBM Lotus Sametime Integration is a plug-in for the IBM Lotus Sametime Connect client that allows users to start video and audio conferences using their videoconferencing systems directly from the Lotus Sametime Connect client. The TANDBERG IBM Lotus Sametime Integration follows the existing user interface of the Lotus Sametime Connect Client allowing users to seamlessly start an audio or a video conference using the existing steps and interface they are accustomed to.

The TANDBERG IBM Lotus Sametime (TILS) integration is a server-based addition to the IBM Lotus Sametime Connect client which allows for a centralized deployment and management of the plugin. When configured, the integration will handle both audio and video calls requests from the Sametime Connect client and utilize the user's configured videoconferencing system for these requests. Details on configuration are found in the Getting started section of this document.

Functional Overview

The components to be installed on the Sametime server will allow the software to intercept connections to the audio and video meeting room functionalities of Sametime and redirect them to the TMS integration. A user that does not have associated himself in TMS is able to disable the TILS integration by choosing to run the Same-time Connect client as normal. Details on how to do this is given in the Getting started section.

Program will create log files in domino program folder named TMSProxy.log

D13967 Rev.7

This document is not to be reproduced in whole
or in part without permission in writing from:

TANDBERG

Requirements

This documentation is written towards a Windows based installation of IBM Lotus Sametime as TANDBERG only supports installation of the Sametime integration on Windows Servers. The Sametime Connect client is multi-platform, but TANDBERG only supports installations on Windows clients using the stand-alone .exe version of the client.

Server Software Requirements

IBM Lotus Domino Server

- Supported IBM Lotus Domino Server Versions running on Windows 2000 or 2003.
 - 6.5.1 with Interim Fix Pack (IF1) applied.
 - 6.5.2 or later 6.5.x releases
 - 7.0
- SSL Support enabled on the Domino Server is strongly suggested.
- Other Domino server platforms have not been specifically tested by TANDBERG.

IBM Lotus Sametime

- IBM Lotus Sametime 6.5.1 Server or Lotus Sametime 7.0 server.

TANDBERG Management Suite

- TANDBERG Management Suite v11.5 or later installed on a separate server from the Domino/Sametime server.
- 'Lotus Sametime integration package with free seats available. SSL Support enabled on the TMS Server is recommended.
- The TMS server must be a member of the same domain or a trusted domain of the computers used by the Sametime Clients.

Client Software Requirements

IBM Lotus Sametime Connect V 6.5.1 or V7.0

- Stand-alone Lotus Sametime Connect Client v6.5.1 or V7.0 running on Windows XP, Windows2000, Windows2003.
- Sametime Users must be logged into computers that are members of the same domain or trusted domains of the TMS server's domain.

Videoconferencing Endpoint Requirements

- Any endpoint that can be managed by the TANDBERG Management Suite (TMS) can be used with the Lotus Sametime Integration. Please see TANDBERG Document **D13237 TMS Product Support Document** (available on the TMS Installation Media) for details on which systems are compatible with TMS.

Installing TANDBERG IBM Lotus Sametime Integration

Installation Overview

The installation of the Sametime integration consists of:

- Setting up TANDBERG Management Suite and adding video systems.
- Installing and configuring the integration components on the Lotus Sametime server.
- Updating the Sametime client files on the Sametime server.

Completing the installation of the Integration requires a Lotus administrator who has the ability and permissions to:

- Copy and move files to the Domino Server itself.
- Access to the Domino Server itself to modify local files on the Windows Server.
- Administrator Access to the Sametime Databases.

Setting up TANDBERG Management Suite and adding video systems

The Lotus Sametime integration relies on an existing TMS v11.5 or newer installation. The TMS server should be configured and operational before attempting to add the Sametime integration components. Please see TANDBERG Document **D12786 Installation Manual Getting Started** for details on installing TMS. Any video conferencing systems that users wish to associate themselves to for use with the Lotus Sametime Clients must be operational in TMS before they are available to Lotus Sametime Clients.

Installing the integration components on the Lotus Sametime server

1. Copy the net directory (and its sub directories) found in the bin folder of the extracted TILS2_server.zip file to the servlet directory on the Domino server (e.g. C:\Program Files\Lotus\Domino\data\domino\servlet)
2. Copy the TMSProxy.properties file found in configuration folder of the extracted TILS2_server.zip file to the servlet directory on the Domino server (e.g. C:\Program Files\Lotus\Domino\data\domino\servlet)
3. Modify the TMSProxy.properties file to reflect your system's values by updating the following:
 - Hostname – The IP or DNS entry of the Domino server running TMSservice – Update the hostname portion of the URL to point to your TMS server (e.g. http://tmsrd/tms/external/im/services/TILSService.asmx)
 - TMSserviceUser – Supply a username that can log into TMS to act as a service account for the TILS Integration. This account must have the BookOnBehalfOf permission in TMS.

The Service Account used by TILS to access TMS does not have to be exclusive to the TILS integration as long as the account has the Book On Behalf of permission. You can use a normal user's account, or an existing service account used for other integrations.

- If “\” is included (e.g. domain\user.name), “\\” has to be used (e.g. domain\\user.name)
- TMSserviceUserPassword – The password for the service account

Since the TMS service username and password is stored in clear text in the properties file, this account should be given limited access to the system. By introduction of a service account, the TILS do no longer store each user's password locally anymore. The user is still authenticated when first time log on

- MCUSupport – This value controls if TILS requires a MCU for calls launched from Sametime. If set to “Never”, TILS 2.1 will not use a MCU when setting up a call in TMS (e.g. only point to point calls are possible.). If set to “Always”, all calls will be connected using a MCU (Multipoint calls are possible)
- Sample Configuration File

```
#Configuration file for the TMSProxy

#To be configured
HostName=<ip or dns-entry of the Domino server running TILS>
TMSService=http://10.47.1.10/tms/external/im/services/TILSService.
asmx
#Configure an tms user to contact TMS
TMSserviceUser=SetCorrectUsername
TMSserviceUserPassword=UpdateThis

#MCU support
#Use Always          - Use MCU for all calls
#   Never            - Never use MCU for calls
MCUSupport=Always

#Leave as is, unless expert
ServerConnectPort=1516
CacheDump=cachedump.txt

#Log4j settings
#Please refer http://logging.apache.org/log4j/docs/ for details on
how to configure Log4j

# Set root logger level to DEBUG and its only appender to main.
log4j.rootLogger=INFO, main

# Define loggers to be used
log4j.logger.net.tandberg.tms.external.sametime=DEBUG, A1

# A1 is set to be a FileAppender.
log4j.appender.A1=org.apache.log4j.RollingFileAppender
log4j.appender.A1.MaxFileSize=5120KB
log4j.appender.A1.File=TMSplugin.log
log4j.appender.A1.layout=org.apache.log4j.PatternLayout
log4j.appender.A1.layout.ConversionPattern=%d{dd MMM yyyy} %d{HH:mm:ss} %-5p %c{1} {%t} - [%m]%n

log4j.appender.main=org.apache.log4j.RollingFileAppender
log4j.appender.main.MaxFileSize=5120KB
log4j.appender.main.File=TMSplugin_complete.log
log4j.appender.main.layout=org.apache.log4j.PatternLayout
log4j.appender.main.layout.ConversionPattern=%d{dd MMM yyyy} %d{HH:mm:ss} %-5p %c - [%m]%n
```

Copy libraries

The lib directory of the extracted TILS2_server.zip file contains the library files needed to run TILS 2.1. Some of those files are already available in the jvm\lib\ext in the Domino file structure (e.g. C:\Program Files\Lotus\Domino\jvm\lib\ext), please note the Domino version you are using and the notes below and then copy the jar files that are missing from the lib folder to the jvm/lib/ext folder.

Please notice the differences between Domino 6.5.x and Domino 7.0

Domino v. 6.5.x

You will find

- Activation.jar
- Mail.jar

There is no need to replace those files.

In addition to the files in jvm/lib/ext, you will have to replace the log4j.jar file found in the Domino directory (e.g. c:\Program Files\Lotus\Domino), with the log4j-1.2.9.jar found in the lib directory of the TILS2_server.zip file. Rename this file to log4j.jar prior to copying it into Domino directory.

Please read and accept the end user's license agreement. Click "I accept the terms of the license agreement" and "Next" to accept the license agreement.

Domino v. 7.0

You are likely to find the following files already in place:

- Activation.jar
- Mail.jar
- Jsdk.jar

1. Copy the content of html directory of the extracted TILS2_server.zip file to the html directory of Domino (e.g. C:\Program Files\Lotus\Domino\data\domino\html)

2. Update the C:\Program Files\Lotus\Domino\jvm\lib\security\java.policy file by adding the following two lines if not already present

```
permission java.util.PropertyPermission "java.protocol.handler.pkgs",  
"read";  
permission java.util.PropertyPermission "java.protocol.handler.pkgs",  
"write";
```

3. Update the servlets.properties file in the C:\Program Files\Lotus\Domino\Data directory by adding the following lines. These lines must be added BEFORE the line starting with servletstartup. Make sure to update the propertiesFile path to match the file path to TMSProxy.properties on your server and update serverName to the DNS name or IP Address of your TMS server

```
servlet.TMSProxy.code=net.tandberg.tms.external.sametime.TMSProxy  
servlet.TMSProxy.initArgs=propertiesFile=C:\\Program Files\\Lotus\\  
Domino\\Data\\domino\\servlet\\TMSProxy.properties  
servlet.TMSAdmin.code=net.tandberg.tms.external.sametime.admin.Admin  
servlet.TMSAdmin.initArgs=serverName=tms.company.com
```

4. find the line starting with `servletstartup` and add `TMSProxy` and `TMSAdmin` to the end of that line

Enable Java Servlet Support in the Domino web server

1. Java servlets must be enabled for the TMS Integration to operate. Follow the steps below to verify servlets are enabled on the Domino web server. Further details on java servlets is available from IBM at

http://www-12.lotus.com/ldd/doc/domino_notes/Rnext/help6_designer.nsf/0/81c15cf1464d727585256c54004b850e?OpenDocument

2. Open the Domino Administrator application and open the Current Server Configuration Document under the Configuration tab for the Domino server hosting Sametime
3. Under Internet Protocols -> Domino Web Engine the Java Servlets configuration should be configured as follows:

Java servlet support:	Domino Servlet Manager
Servlet URL path :	/servlet
Class path :	domino\servlet

If any changes are required, update the values to the ones shown above and then save the document

Enabling of SSL support

The TANDBERG IBM Lotus Sametime integration does not require SSL support in order to operate, but SSL is strongly recommended to protect the Windows login information of Sametime clients. The Sametime user's login information is used to log into the TMS server through the Sametime server. As such, for the best security, both the link between the Sametime Client and the Sametime Server, and the link between the Sametime Server and TMS should use SSL. Enabling SSL requires using HTTPS in the properties files of the Sametime installation described in the next section and enabling SSL for Domino and TMS.

Enabling SSL requires certificates. Certificates should be acquired through a trusted Certificate Authority such as Verisign. An alternative is to use self-signed certificate. Self-signed certificates do not provide the trusted identify or authorization that a certificate authority would, but will allow the traffic between the servers to be encrypted. This section describes how to enable SSL support on the Domino server using self-signed certificates. Further information on setting up SSL and trusted certificates can be found in the *Domino Administrator help* under *Setting up SSL* on a Domino server

Enabling of SSL on the IBM Lotus Sametime server

1. Open the Domino Administrator application, and open the Server Certificate Admin database (`certsvr.nsf`) database on your Domino server.
2. Click "Create key ring with self certified certificate"
3. Note the keyring file name and rename if desired. Default is 'selfcert.kyr'
4. Supply a password to use with the keyring and confirm it
5. Fill in the Distinguished Name fields as appropriate for your server and location. Common name should be the fully qualified domain name for the server. Example: `sametime.company.com`
6. Click 'Create Key Ring with Self-Signed Certificate'
7. When the process completes, Notes creates the key ring file and stash (.STH) file and places them in the Notes data directory on the client machine used to create the key ring

8. Copy the keyring file and stash file to the data directory of the Domino Server
9. Open the Server Configuration Document for the Domino Server Go to Ports -> Internet Ports
10. Under SSL Settings, enter the filename for your keyring file. Example: selfcert.kyr
11. Under the Web tab, ensure the SSL Port number is 443 and SSL Port Status is enabled
12. Save and Close the Server Document
13. Under the Server tab, Server Tasks, restart the HTTP Service

Enabling of SSL on the TMS Server

1. Use the makecert.exe (standard .net Framework tool) to create a self-signed certificate. Makecert.exe is available from Windows SDK Update site.

```
makecert.exe -a SHA1 -ss my -sr LocalMachine -n "CN=%ComputerName% -
b 01/01/2000 -e 01/01/2050 -eku 1.3.6.1.5.5.7.3.1 -sky exchange -sp
"Microsoft RSA SChannel Cryptographic Provider" -sy 12
```

2. Replace %ComputerName% with the name of the computer. The computer name is found under the "Computer Name" tab in "System Properties".
3. Open IIS and bring up the properties of the site, e.g. the TMS site.
4. Select "Directory Security", and select the "Server certificate" in the "Secure communications" section.
5. When the wizard pops up, hit "Next", and then "Assign an existing certificate". You should be able to see the certificate that was created, hit "Next" to see some information about the certificate, and hit "Next again" to complete the installation.

Updating the Sametime Client files on Sametime server

1. Unzip the file TILS_Client.zip
2. Copy the *SametimeApplet.jar* file from the *sametime\bin* folder of the extracted archive into the *domino\html\sametime\stmeetingroomclient* directory of the **Domino data directory**. Default location is *C:\Lotus\Domino\data\domino\html\sametime\stmeetingroomclient*
3. Copy the *TMSPlugin.properties* file from the *sametime\configuration* folder of the extracted archive into the *domino\html* directory of the **Domino data directory**. Default location is *C:\Lotus\Domino\data\domino\html*
4. Open the *TMSPlugin.properties* file you just copied in a text editor. Update the hostname in the URL in the **TMSProxy** lines to the hostname of your Sametime server.

Example:

```
TMSProxy=http://sametime.company.com/servlet/TMSProxy
```

NOTE: Using SSL on the connection to Sametime is strongly recommended. To instruct the applet to use SSL to Sametime Server use https:// in the TMSProxy statement instead of http:// . SSL must be enabled on the Sametime Server

4. Copy the TILS.js file found in javascript directory of the extracted TILS2_client.zip file to the html directory of the Domino, e.g. C:\Program Files\Lotus\Domino\data\domino\html

Please note that there is one such subform for each browser supported. The modification described will only enable support for Internet Explorer

Update the stsrc.nsf database

1. Start the Domino server application
2. Start the Lotus Domino Designer application and open the **stsrc.nsf** database on the Sametime server. You can open the database by going to **File -> Database -> Open** and select the Sametime server and select the **stsrc.nsf** database from the list.
3. Locate the WebAttendMRC-IE subform found under Shared Code -> Subform and update the text to match the figure shown below:

```
<APPLET CODEBASE="<Computed Value>sametime/stmeetingroomcli-ent/" code=net.tandberg.tms.sametime.applet.SametimePlugin name="SameTimeApplet" archive="SametimeApplet.jar" width=100% height=100% VIEWASTEXT MAYSCRIPT>
```

The portion in blue must be updated with new text. This text must be manually overwritten by typing out the text. You can not copy and paste.

5. Locate the WebAttend form under Forms and click to select it. In the center window, scroll to near the end where you will find the green text ending with a line `</script>`

Type the following lines after the `</script>` line. These lines must be typed out; you can not use copy and paste.

Insert `<script type="text/javascript" src="http://<Computed Value>/TILS.js"></script>`

The Webattend will look similar to this:

Notice the difference between Domino 6.5.x and Domino 7.0

```
function hideSplashScreen()
{
    if ((wOpen != null) && (!wOpen.closed))
        wOpen.close();
}
</script>
<script type="text/javascript" src="http://<Computed Value>/TILS.js"></script>

<Computed Subform>

<!--RunMenuFunctions-->
Domino 6.5.x

</script>
<script type="text/javascript" src="http://<Computed Value>/TILS.js"></script>
<style type="text/css">#container { position: absolute; top: 1px; left: 0; width:100%; height: 100%; margin: 0; padding: 0; border: 0; } iframe { width: 100%; height: 100%; } /* #stapp { position:absolute; visibility: visible; border: 1px solid red; top: 100%; } */</style>
<div id="container"><iframe scrolling="auto" src="?"<Computed Value> frameborder="0"></iframe></div>
<div id="stapp">
Domino 7
```

9. Save and close Domino Designer

This section introduces how to use the TANDBERG IBM Lotus Sametime integration. See Installing TANDBERG IBM Lotus Sametime Integration section below for installation instructions.

Note! After installing Windows XP Service Pack 2 on client machines, users will experience problems connecting to the IBM Lotus Sametime server and issues to start the IBM Lotus Sametime integration. This is caused by security settings, and is further described in IBM Technote #1176141 <http://www-1.ibm.com/support/docview.wss?rs=477&uid=swg21176141>

Upgrading TANDBERG IBM Lotus Sametime Integration from previous version

TILS Upgrade instructions

This section covers upgrading an existing installation of TILS v1 to TILS v2. Note, TMS v11.5 is required for TILS v2 operation; earlier versions of TMS will not interoperate with TILS v2.

- Upgrade Overview
- Copy files to server
- Stop Domino server
- Upgrade and Configure server components of TILS 2.1 (See Server) Upgrade and Configure client file components of TILS 2.1 (See Client)

Server files upgrade

- On the Domino server, navigate to the servlet/net directory (eg. C:\Program Files\Lotus\Domino\data\domino\servlet\net).and delete the tandberg/ subfolder and its subdirectories
- Copy net directory (and its sub directories) found in bin directory of the extracted TILS2_server.zip file to the servlet directory on the Domino server (e.g. C:\Program Files\Lotus\Domino\data\domino\servlet).

It is recommended to delete the contents in the servlet/net/tandberg directory, but not required for TILS2.1 to run.

- Copy the TMSProxy.properties file from the configuration directory of the extracted TILS2_server.zip file to the servlet directory on the Domino server (e.g. C:\Program Files\Lotus\Domino\data\domino\servlet)
- Edit the TMSProxy.properties file to reflect your system's values

Update

- Hostname – The IP or DNS entry of the Domino server running TILS
- TMSservice – Update the hostname portion of the URL to point to your TMS server (e.g. http://tmsrd/tms/external/im/services/TILSService.asmx)
- TMSserviceUser – Supply a username that can log into TMS to act as a service account for the TILS Integration. This account must have the BookOnBehalfOf permission in TMS. If “\” is included (e.g. domain\user.name), “\\” has to be used (e.g. domain\\user.name)
- TMSserviceUserPassword – The password for the service account
- MCUSupport – This value controls if TILS requires a MCU for calls launched from Sametime. If set to “Never”, TILS 2.1 will not use a MCU when setting up a call in TMS (e.g. only point to point calls are possible.). If set to “Always”, all calls will be connected using a MCU (e.g. multipoint calls are possible, and it is possible to add new participants to an existing call).
- The lib directory of the extracted TILS2_server_latest.zip file contains the library files needed to run TILS 2.1. Some of those files are already available in the jvm\lib\ext in the Domino file structure (e.g. C:\Program Files\Lotus\Domino\jvm\lib\ext)

TILS 2.1 uses a newer version of Apache Axis, make sure to upgrade the following files:

- Axis.jar
- Commons-logging-x.jar (to commons-logging-1.0.4.jar)
- Jaxrpc.jar
- Saaj.jar
- Wsdl4j.jar
- Axis-ant.jar
- Axis-schema.jar

Make sure that all.jar is not present in either jvm/lib/ext nor in JavaUser-Classes of Notes.ini

(No modifications in the files in the html directory, consequently no modifications are needed with respect to those)

Client files upgrade

- Copy SametimeApplet.jar found in the bin directory of the extracted TILS2_client.zip file to C:\Program Files\Lotus\Domino\data\domino\html\sametime\stmeetingroomclient of the Domino server and overwrite the existing file.
- Start the Domino Server
- Open Domino Designer and open the Sametime Resources (stsrc.nsf) database on the Domino server
- Locate the WebAttendMRC-IE Subform under Shared Code -> Subform and modify it to look like the figure below

Update

- Shared code -> Subform -> WebAttendMRC-IE

```
<APPLET CODEBASE="<Computed Value>sametime/stmeetingroomcli-ent/" code=net.tandberg.tms.sametime.applet.SametimePlugin name="SameTimeApplet" archive="SametimeApplet.jar" width=100% height=100% VIEWASTEXT MAYSCRIPT>
```

Locate the WebAttend form under Forms and click to select it. In the center window, scroll to near the end where you will find the green text ending with a line </script>

- Type the following lines after the </script> line. These lines must be typed out; you can not use copy and paste.

```
Insert <script type="text/javascript" src="http://<domino server url>/TILS.js"></script>
```

The Webattend will look similar to this:

Notice the difference between Domino 6.5.x and Domino 7.0

```
function hideSplashScreen()
{
    if ((wOpen != null) && (!wOpen.closed))
        wOpen.close();
}
</script>
<script type="text/javascript" src="http://tms-sametime.tms.lab/TILS.js"></script>

<Computed Subform>

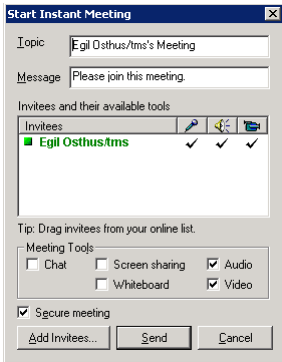
<!--RunMenuFunctions-->
(Domino 6.5)
```

```
</script>
<script type="text/javascript" src="http://tms-sametime.tms.lab/TILS.
js"></script>
<style type="text/css">#container { position: absolute; top: 1px;
left: 0; width:100%; height: 100%; margin: 0; padding: 0; border: 0;
} iframe { width: 100%; height: 100%; } /* #stapp { position:abso-
lute; visibility: visible; border: 1px solid red; top: 100%; } */</
style>
<div id="container"><iframe scrolling="auto" src="?"<Computed Value>"
frameborder="0"></iframe></div>
<div id="stapp">
(Domino 7.0)
```

Delete the following section from the Webattend form that was added as part of the TILS v1 install.

```
function closeWindow()
{
top.window.close();
}
function resizeForAudio()
{
top.resizeTo(260,510);
}
```

Getting started

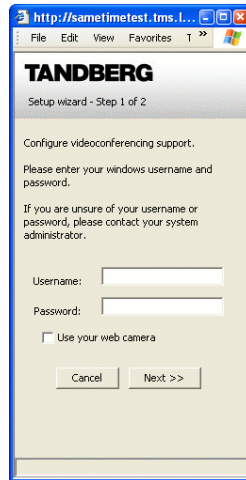


Starting the TANDBERG IBM Lotus Sametime integration

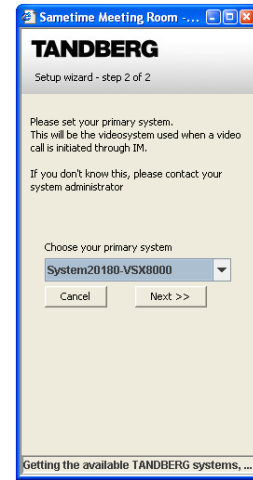
To start the TANDBERG IBM Lotus Sametime integration, start a video or audio meeting from your IBM Lotus Sametime Connect client as usual. If the multisite option is enabled, multiple participants can be chosen.

Configuration

When the TANDBERG IBM Lotus Sametime integration is started for the first time, a setup wizard is displayed.



Step 1



Step 2

Step 1

The setup wizard Step 1 of 2 is shown in Figure 2.

This step is to configure your TMS user account with the IBM Lotus Sametime Connect client. Enter the TMS user name and TMS password (which is the same as your Windows user name and password). Note that the user name has to be entered by using both the domain and user name, if domain is enabled, e.g. *domain\user.name*

If “Use Sametime video client” is checked, the IBM Lotus Sametime video meeting will be initiated when “Next >>” is pressed. The next time the Tandberg IBM Lotus Sametime Integration is started, the Sametime video client will be launched. To reset this setting, please refer the Resetting the TANDBERG IBM Lotus Sametime integration section

To use TANDBERG IBM Lotus Sametime integration, leave “Use web cam” unchecked, and press next. If “Use web cam” is checked, the default Sametime video conference will start on your desktop, using you attached web cam. This option does not support call to an external video endpoint..

Step 2

The available video systems for the TMS user identified in Setup wizard step 1 of 2 will now be available in Setup wizard 2, see Figure 2. Your primary system is the system that will be used for all your future video and audio conferences. To change your primary system, please refer to the Reconfigure the TANDBERG IBM Lotus Sametime integration section.

To use TANDBERG IBM Lotus Sametime integration, leave “Use web cam” unchecked, and press next. If “Use web cam” is checked, the default Sametime video conference will start on your desktop, using you attached web cam. This option does not support call to an external video endpoint..

Figure 1 IBM Lotus
Sametime Connect client

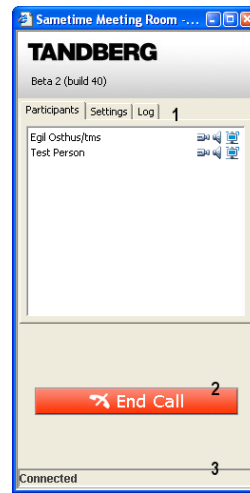


Figure 3 – Call window
1) Tabs, 2) End button, 3) Status field

Figure 2 Setup Wizard

The window consists of three important components for the caller:

1. The tabs
2. The “End Call” button
3. The status field

The status field is where the status messages from the server to the user are displayed. Occasionally the length of the status messages is longer than the field itself, the full text is then available by holding the mouse pointer over the text. The status information is also available under the “Log” tab.

The call window will display when an audio or video request is sent, and will show the course of events in the call setup.

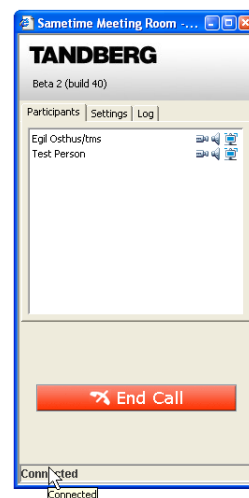


Figure 4 – Status information always available as tooltip

The call screen has three different tabs available, “Participants”, “Settings” and “Log”.

Participants

The participants that are a part of the call are listed under “Participants”.

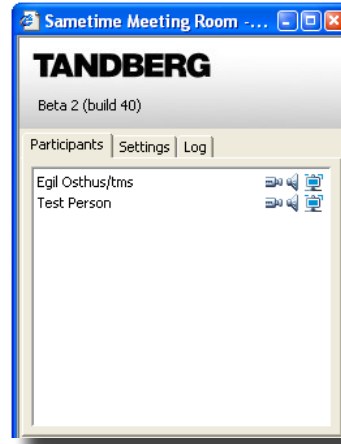


Figure 5 – Participants

Each participant is listed with information about the system, video and audio status. By placing the mouse pointer on top of one of the icon's, a textual description will appear, giving detailed information.

It should be noticed that the information about the system, the audio and video codec is not available before the call is established.

Settings

The current configuration of the TANDBERG IBM Lotus integration is available under the “Settings” tab.

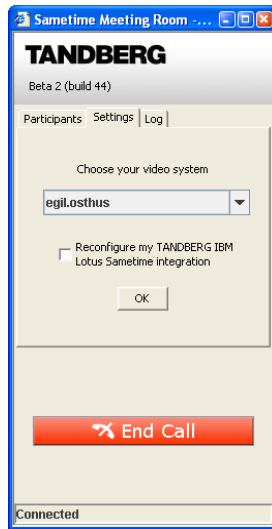


Figure 6 – Settings

For details see the Reconfigure the TANDBERG IBM Lotus Sametime integration section.

Log

The “log” tab provides a call log. All messages displayed in the status field are also logged here. This tab is for info purpose.

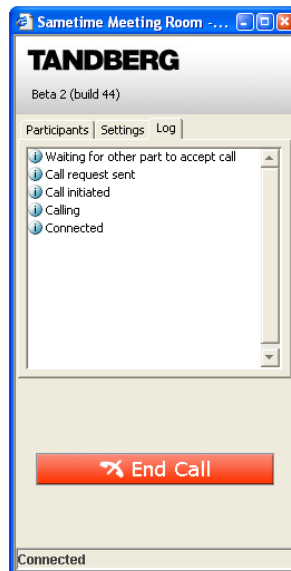


Figure 7 – Log

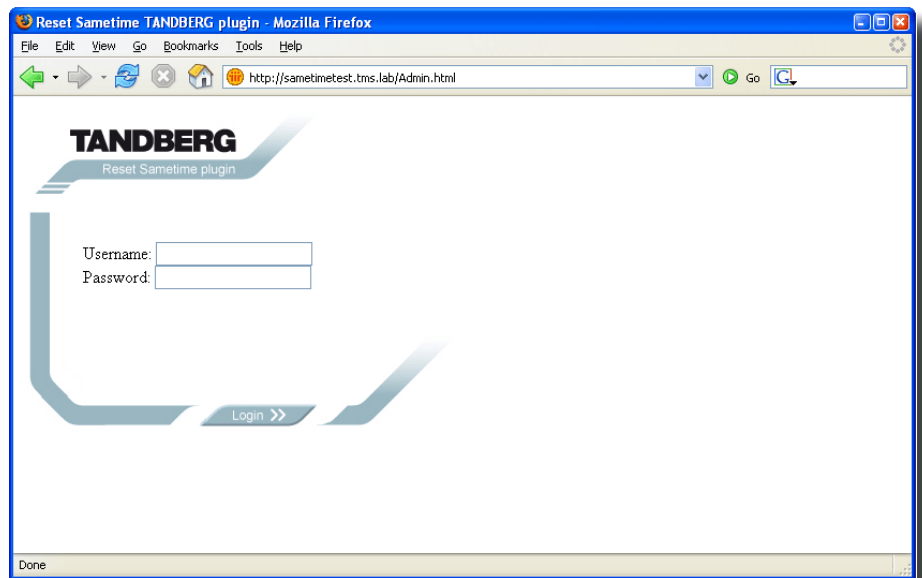
Reconfigure the TANDBERG IBM Lotus Sametime integration

The Tandberg IBM Lotus Sametime Integration could be reconfigured from the “Settings” tab. The available settings are shown in Figure 6. To set another video system as the primary endpoint to use for video and audio conversations, use the drop down menu “Choose your video system”. This drop down list includes all the video systems available for the TMS user, configured when Tandberg IBM Lotus Sametime integration was first initiated.

By choosing the “Reconfigure my TANDBERG IBM Lotus Sametime Integration settings”, the configuration wizard (see Figure 2) will pop up the next time the Tandberg IBM Lotus Sametime Integration is started. This makes it possible to reconfigure the TMS user defined for this Domino user like first time run.

Resetting the TANDBERG IBM Lotus Sametime integration

If “Use web cam” was chosen the first time the TANDBERG IBM Lotus Sametime integration was started, this setting will be kept until the user is reconfigured. To reset oneself when the default Sametime video client is in use; go to <http://sametime.company.com/Admin.html>. By entering the Domino username and password on this page, the Domino user will be reset. Please notice that this will log out the user from the Sametime Connect client. The next time an audio or video is initiated from the IBM Lotus Sametime Connect client, the TANDBERG IBM Lotus Sametime integration setup wizard will pop up. Please consult the “Getting started” section for details.



References

- [1] Lotus Instant Messaging and Web Conferencing (Sametime) 6.5.1 Installation Guide, G210-1646-00

.....

